



# Charolais

Show and Sale

23 Bulls and 7 Heifers

Thursday, February 19, 2009

Show - 11:00 a.m. Sale - 3:00 p.m.

Buffalo County Fairgrounds, Kearney, Nebraska

### JUDGE:

Bill Conley of Clarksdale, MO

### AUCTIONEER:

Tracy Harl of Hastings, NE

### BREED REPRESENTATIVES:

Gabe Schnuelle of Jansen, NE

Larry Dybdal of New Castle, NE

### RINGMEN:

Art Handel from Handel Marketing

605.391.8233

Randy Rasby from Livestock Plus

308.539.6195

Jeff Aegerter

402.641.4696

Kristian Rennert - American Charolais Assn.

308.440.9463

SALE DAY PHONE  
**RONETTE BUSH**

CLASSIC MANAGER

308.627.6385

AUCTION BLOCK:

308.233.3749

LIVESTOCK OFFICE:

308.293.5560



Charolais

# Charolais

---

- Benes Cattle Co.....Lots: 2, 12**  
Mitch Benes - 402.784.0404 or 402.525.0229  
PO Box 424 - Valparaiso, NE 68065
- Cannon Farms.....Lots: 7, 18**  
Tom Cannon - 641.792.0357  
6549 Hwy F-36 W - Newton, IA 50208
- Dybdal Charolais.....Lots: 22, 23, 27**  
Larry or Krista Dybdal - 402.692.3704  
or 402.841.9784  
88361 575 Ave - Newcastle, NE 68757
- EJ Shepherd Charolais.....Lots: 16, 20**  
Everett or Julie Shepherd - 515.523.2100  
or 515.321.270  
212 S Division St - Stuart, IA 50250
- Fancy Creek Charolais.....Lots: 4, 13, 14**  
Don Olsen - 785.363.2519 or 785.313.2099  
17050 Tuttle Creek Blvd - Randolph, KS 66554
- Funk Charolais.....Lots: 19, 29**  
Dale Funk - 402.894.2222 or 402.659.8932  
13709 Industrial Rd - Omaha, NE 68137
- J2K Cattle.....Lot: 10**  
Jenifer, Cassidy or Kayton Bremer - 515.833.2032  
or 641.680.1480  
PO Box 397 - Redfield, IA 50233
- Kanza Cattle.....Lots: 11, 25**  
Audrey Hambright - 785.922.7063  
or 785.479.7468  
1853 2700 Ave - Chapman, KS 67431
- Kotrous Charolais.....Lot: 17**  
Jim or Judy Kotrous - 308.550.0254  
52050 878 Rd - Verdigrée, NE 68763
- LaFraise Farms.....Lots: 5, 6, 8, 9**  
Paul Bertsche - 815.796.2662  
4540 E 1700 N Rd - Flanagan, IL 61740
- Morgan Cattle Co.....Lots: 1, 26**  
Ted Morgan - 970.346.9570 or 970.381.0118  
30542 Hwy 37 - Greeley, CO 80631
- Schnuelle Charolais.....Lot: 3**  
Gabe Schnuelle - 402.520.4871  
www.schnuelleranch.com  
71715 581 Ave - Jansen, NE 68377
- Schultz Brothers.....Lot: 15**  
Peter Schultz - 515.275.2638  
435 170 St - Ogden, IA 50212
- Sonderup Charolais Ranch Inc.....Lots: 24, 30**  
Tom Sonderup - 308.550.0254  
19488 Valley Rd - Fullerton, NE 68638
- West Fork Ranch.....Lots: 21, 28**  
Roseann Wilson - 308.745.0378 or 308.750.8708  
www.westforkranch.com  
78939 Hwy 10 - Loup City, NE 68853

## Nebraska Charolais Association Annual Meeting & Banquet Wednesday, February 18, 2009

**6:00 p.m. - 7:00 p.m. - Social in the Classic Charolais Stalls**  
**7:00 p.m. - Annual Meeting & Banquet at the Classic Sale Arena**  
**Special Speaker: Twig Marston**

**Join the Charolais breeders from across the Mid-West for a fun social event on Wednesday Evening. It is open to anyone interested in Charolais cattle. Dinner will be served. Call the NCA President, Larry Dybdal, at 402.841.9784 for reservations so they know how much food will be needed.**

# Charolais

**1 Bull Morgan Cattle Co**  
- 2TM-Keys Movin' On 5T -  
Polled Purebred Calved: 01/26/2007 Reg.#: M748005 Tattoo: 5T

Keys McHenry 24M <b>Keys McTender 279P</b> Keys ABE 70C	Keys Handyman Pld 255H Miss Key Diana 102G Pl Mr Key Abraham 23 Miss Key Hurdler 119Z Keys Polled Compass Lone Tree Samantha 232 P Mr Abraham Cadet 6 Alger 58	BW:16 WW:29 YW:49 Milk:0 Mtnl:15
Keys Pld Navigator 30E <b>Miss Key Rocket R46H</b> Miss Rocket 6-39		

BW: 70 Unassisted; Adj. 205 WT: 584; Retaining 3/4 Semen Interest.  
Here's a herd bull prospect with the look we are all searching for.

**6 Bull LaFraise Farms**  
- LaFraise Flawless 507 -  
Polled Purebred Calved: 08/01/2007 Reg.#: M761824 Tattoo: 507

CJC Trademark H45 <b>LHD Flawless R1538 Pld</b> LHD Ms HCCigar N386	LHD Ali Mark T214 CJC Ms Perfect F57 HC Cigar 1337 LHD Ms Supreme L304 RCC Royal Contractor FF Ms Fairfield 552 Pld LT Unlimited Leader 0117 LaFraise Krystle 448	BW:27 WW:38 YW:58 Milk:7 SC:06
Mr Inland Expediter 501 <b>LaFraise JB Krystle 857</b> LaFraise Krystle 485 Pld		

BW: 81 Unassisted; Adj. 205 WT: 785; Adj. 365 WT: 1285  
This is a stout son of the \$17,500 LHD Flawless. His dam is a top producing daughter of the foundation sire, Inland Expediter.

**2 Bull Benes Cattle Co**  
- BCR Mr Bullion 710 -  
Polled Purebred Calved: 03/10/2007 Reg.#: M746221 Tattoo: 710

HSV Atlas 334 <b>WEC Bullion</b> WEC White Gold	LT Rio Blanco 1234 P HSV Orinda 728 WR Chuckwagon 2409 WEC 14 Karat Gold CJ Laredo 725P BCR Ms Polled Benes 629 Sonderglen Jack 25U BCR Miss Atlas Benes 652	BW:08
BCR Polled Pursuit 926 <b>BCR Ms Pretty Polled 349</b> BCR Jack's Girl 901		

BW: 84 Unassisted; Adj. 205 WT: 774  
BCR Mr Bullion 710 is a very complete coming two year old bull that will be very useful. He was Reserve Grand Champion at the 2008 Nebraska State Fair. If you liked the two year old bull we had last year, then take a look at this bull.

**7 Bull Cannon Farms**  
- CCF Impressive 0759 P ET -  
Polled Purebred Calved: 09/03/2007 Reg.#: EM751491 Tattoo: 0759 ET

WCR Sir Fa Mac 2244 <b>JWK Impressive D040 ET</b> HBR Lady Liz 721 P	WCR Sir Fab Mac 809 WCR Miss Century 920 Twn HBR Impact HBR Lady Mack 459 P NZL Polled Raven 165Y Chardel Lady Sage 1003Z WCR Sir Tradition 066 WCR Miss Duke 8714	BW:1 WW:24 YW:41 Milk:5 Mtnl:19 SC:02 CW:13 REA:01
HTA Tundra Pld 222B <b>GS Tina 5493</b> WCR Miss Tradition 3493		

BW: 91 Unassisted; FAT:0016; Marb:0.12  
0759 is a big, stout, older bull. Impressive will add growth and carcass traits to a calf crop without causing calving problems. Both sides of this pedigree are loaded with proven genetics. A maternal brother to this bull was selected champion at the Royal Breeders Classic.

**3 Bull Schnuelle Charolais**  
- SCH Meat Wagon 7126 Pld -  
Polled Purebred Calved: 05/11/2007 Reg.#: M761943 Tattoo: 7126

Impair <b>Cave Midas Touch 132M</b> BeeBe Casoar's Emily 26E	Blason Officine Casoar Beebe's Calpine 1C HCR Exodus 9033 Polled Miss HCR Mac 2015 Polled WC Admiral Jones SCH Iron Lady S028 Poll	BW:03 WW:8 YW:19 Milk:6 Mtnl:3
HCR Flash 5074 Polled <b>SCH Miss Sammy S092</b> SCH Miss Admiral S401		

BW: 78 Unassisted; Scrotal: 29 cm  
Meat Wagon will simply add power and substance to your calf crop. He is very quiet tempered and has exceptional feet and legs. Use him to improve yield grade and quality grade for finishing operations.

**8 Bull LaFraise Farms**  
- LaFraise Wind 277 -  
Polled Purebred Calved: 09/15/2007 Reg.#: M756032 Tattoo: 277

LT Wyoming Wind 4020 Pld Three Trees Wind 0383 ET Three Trees Nancy 8121ET	Schurrtop 5627 LT Chap's Lady 2170P Skymont Ease 2078 WCR Miss Mac IV 5138 ET LHD Cigar E46 JD Ms Commander B309 VCR Sir Duke 914 Pld LaFraise Krystle 638 Pld	BW:08 WW:25 YW:45 Milk:9 SC:1 CW:15 REA:0.36
JDJ Smokester J1377 P ET LaFraise Kate 265 LaFraise Kari 62A ET		

BW: 82 Unassisted; Adj. 205 WT: 805; Adj. 365 WT: 1340; FAT:0009; Marb:0.12  
277 was a Senior Bull Calf Champion at the 2008 Illinois State Fair! He is a top performing son of the calving ease bull, Three Trees Wind 0383. His dam is a first calf heifer that won her class at the 2006 National Junior Show!

**4 Bull Fancy Creek Charolais**  
- Fancy Creek Prime Time 722P -  
Polled Purebred Calved: 06/01/2007 Reg.#: M762059 Tattoo: 722

WCR Prime Time 908P <b>HCR Prime Time 2072 Pld</b> Miss HCR Reflection 9035	WCR Prime Cut 764 Pld WCR Miss Dakota Wind7158 LT Reflection 7136 Pld Miss TLC Mac 029p HCR Exonerator Polled Miss HCR Mac 2308 HCR Exonerator Polled ASC Indy 344	BW:09 WW:19 YW:28 Milk:4 Mtnl:13 CW:9 REA:0.24
ASC Eliminator 032 <b>ASC Lady Elegance 515</b> ASC Lady Exon 719		

BW: 78 Unassisted; Adj. 205 WT: 678; Adj. 365 WT: 1278; FAT:0002; Marb:0.07  
722 was sired by our easy calving herd sire, HCR Prime Time 2072. He's a natural calf out of our donor dam, ASC Elegance 515, who was our pick of the Arrow S Dispersal. This bull will sire easy calving, high performing calves with a lot of quality.

**9 Bull LaFraise Farms**  
- LaFraise Smokin Hot 207 -  
Polled Purebred Calved: 11/20/2007 Reg.#: M7551402 Tattoo: 207

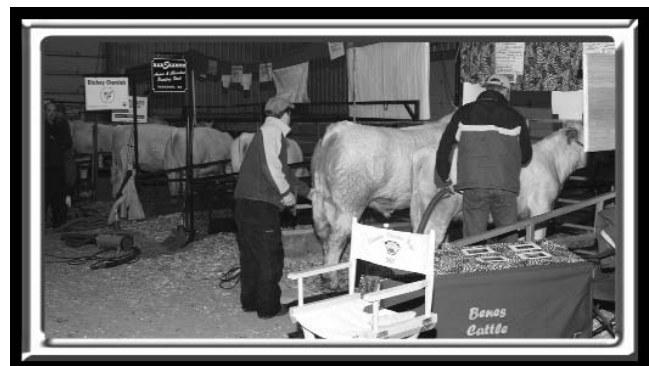
Thomas OAHE Wind0772ETP <b>TR SmokeOnTheWater ET</b> ThomasSwissersweet1764ET	LT Wyoming Wind 4020 Pld Thomas Ms Camelot 5646 LHD Cigar E46 Thomas Ms Bonanza 8698 RCC Royal Contractor FF Ms Fairfield 552 Pld LT Unlimited Chaps 0109 LaFraise Morgan Marie	BW:07 WW:32 YW:54 Milk:3 C:07 CW:24 REA:0.35
Mr Inland Expediter 501 <b>LaFraise Marie 220</b> LaFraise Morgan Marie135		

BW: 78 Unassisted; Adj. 205 WT: 765; Adj. 365 WT: 1300; FAT:0005; Marb:0.16  
207 was Grand Champion Bull at the 2008 Heart of Illinois Fair. He is a long, thick, clean made son of Smoke on the Water, who sired the 2007 National Champion Female.

**5 Bull LaFraise Farms**  
- LaFraise Bud 777 -  
Polled Purebred Calved: 07/13/2007 Reg.#: M761717 Tattoo: 777

RC BudsMyDad 225 Polled <b>WDZ Bud 434 Pld ET</b> Wal-Mar Penny Stock6012P	RC Bud 04 ET Miss Showgun RC 416 Stock Exchange 417 Flying L Miss Performer Eatons Predictor 9230 LT Maiden's Breeze 8242P LT Unlimited Chaps 0109 LaFraise Krystle 440	BW:25 WW:23 YW:40 Milk:5 SC:08 CW:10 REA:0.08
LT Western Spur 2061 Pld <b>LaFraise Krystle 455A ET</b> LaFraise JB Krystle 445		

BW: 85 Unassisted; Adj. 205 WT: 750; Adj. 365 WT: 1265; FAT:0004; Marb:0.03  
Here is a son of Bud 434, who has sired many show winners and sale toppers around the country during the past year. His dam is a good milking female, full of Lidskov-Thiel genetics.



# Charolais

**10** Bull **J2K Cattle**  
- J2K Unforgiven -  
Polled Purebred Calved: 12/12/2007 Reg.#: M761512 Tattoo: 799



HooDoo Slasher 1144	HooDoo Crook 7118	BW:15
<b>D R Samurai 775</b>	Miss HooDoo Z6151	WW:20
Dr Roxy 132 ET	Baldrige Cadillac 74E	YW:37
	MD Ms Silvermark G141	Milk:3
JWC Ybor King 114 ET	LHD Mr Perfect Y416	CW:4
<b>OCR Miss Stogy S58</b>	LHD Ms Classic Bell X613	REA:014
OCR Miss Duke N97	OCR Sir Duke L28 Polled	
	OCR Cindy Lew K52	

BW: 80 Unassisted; Adj. 205 WT: 816; Adj. 365 WT: 1352; FAT:0002; Marb:006  
Attention Ranchers: Here's a bull you need to look up. He has a low birth weight and tremendous growth. He's sound, deep ribbed and stout.

**11** Bull **Kanza Cattle**  
- Kanza Prime Time 722 -  
Polled Purebred Calved: 12/19/2007 Reg.#: M753047 Tattoo: 722



WCR Prime Cut 764 Pld	JWK Impressive D040 ET	BW:-03
<b>WCR Prime Time 908 P</b>	WCR Miss Ease 4314	WW:21
WCR Miss Dakota Wind7158	LT Wyoming Wind 4020 Pld	YW:37
	WCR Miss T 1375	Milk:2
TCC Freightliner 001	PF Impressed 620 P ET	Mtnl:9
<b>Brents Miss Fran 328 P</b>	Miss HCR Lana 7069	CW:16
Brents Brianna 016 P	HCR Bronco 7212 Polled ET	REA:033
	Miss HCR Sage 7008 Poll	

BW: 80 Unassisted; FAT:0003; Marb:004  
Take a look at this young herd sire. His sire is the #6 leader in both REA and the Fat trait areas. He is as sound as the day is long. He's a moderate-sized yearling with correctness, bone and athleticism. His dam, 328 P, was a successful show heifer at the Charolais National, Jr National and KS Jr Livestock Show. Her sire, TCC Freightliner, went through the NCC sale a few years ago. 722 is semen tested.

**12** Bull **Benes Cattle Co**  
- BCR Mr Instant 802 Pld -  
Polled Purebred Calved: 01/03/2008 Reg.#: M756319 Tattoo: 802

LT Western Spur 2061 Pld	Eatons Predictor 9230	BW:-13
<b>HCR Institute 5054 Pld</b>	LT Maidens Breeze 8242P	WW:17
Miss HCR Reflection 9122	LT Reflection 7136 Pld	YW:30
	Miss HCR Nike 6047	Milk:5
BCR Mr Benes 1102	Belmont's Polled Broker	Mtnl:14
<b>BCR Ms Lindsay</b>	BCR M Polled Pearls 425	
BCR Ms Benes 319	LT Ease 9194 Polled	
	BCR M Polled Pearls 425	

BW: 71 Unassisted  
BCR Mr Instant's 71 pound birth weight and extremely high vigor when born make him a super, calving ease bull. His dam and BCR Mr Instant were Cow Calf Champions at the 2008 Nebraska State Fair. Take a good look at this bull's background and data.

**13** Bull **Fancy Creek Charolais**  
- Fancy Creek Hillegas 802P -  
Polled Purebred Calved: 01/27/2008 Reg.#: M756854 Tattoo: 802

Eatons Predictor 9230	Eatons Performer 6709	BW:06
<b>LT Western Spur 2061 Pld</b>	Eatons Miss Big Sandy	WW:23
LT Maidens Breeze 8242P	LT Wyoming Wind 4020 Pld	YW:44
	LT Unlimited Maiden 1131 Pld	Milk:4
TCC Seminole Wind 196	BBB Mr Blaster 118	Mtnl:16
<b>Miss JV Seminole 030 P</b>	TCC Miss Natasha	SC:102
Miss JV Yale 654 P	NF Yale 9017 Polled	CW:10
	Miss JV Pride P 321	REA:028

BW: 92 Unassisted; Adj. 205 WT: 822; FAT:0007; Marb:006  
This bull was AI sired by the overly popular LT Western Spur. 802 is a very level topped, structurally correct bull with a lot of muscle. He had an actual weaning weight of 822 pounds on August 28, 2008.

**14** Bull **Fancy Creek Charolais**  
- Fancy Creek Spur 809P -  
Polled Purebred Calved: 02/02/2008 Reg.#: M756855 Tattoo: 809

Eatons Predictor 9230	Eatons Performer 6709	BW:2
<b>LT Western Spur 2061 Pld</b>	Eatons Miss Big Sandy	WW:22
LT Maidens Breeze 8242P	LT Wyoming Wind 4020 Pld	YW:39
	LT Unlimited Maiden 1131	Milk:2
ASC Polled Engineer 432	HCR Exonerator Polled	Mtnl:13
<b>Fancy Miss Ellie 202 P</b>	M&M Amaris 5519	
ASC Lady Elegance 516	ASC Eliminator 032	
	ASC Lady Exon 719	

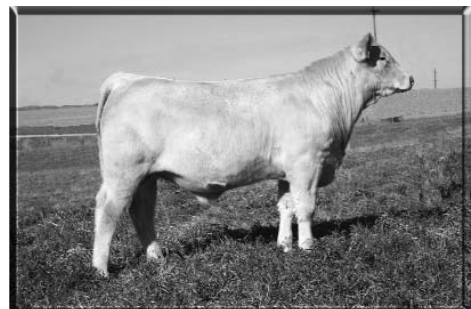
BW: 94 Unassisted; Adj. 205 WT: 842  
Here is another bull sired by the popular LT Western Spur. He was Reserve Champion at the Kansas State Fair. He is moderate framed with a big top and lots of muscle. He had an actual weaning weight of 842 pounds on August 28, 2008.

**15** Bull **Schultz Brothers**  
- PS Holmes Pld -  
Polled Purebred Calved: 02/20/2008 Reg.#: Pending Tattoo: 238

Schurrtop 5627	WCR Sir Duke 783
<b>LT Wyoming Mind 4020</b>	Miss Sugar Valley 908
LT Chaps Lady 3280P	LT Unlimited Chaps 0109
	LT Prairie Maiden 8095
ACE Mr Eastwood 830 PET	Sly Eastwood Pld
<b>JS Miss Eastwood 6236 P</b>	Miss Key Compass 3E Pld
K C Miss 49 8627	KC Unlimited Mac 49 ET Pld
	KC Miss Duke 6217P

BW: 84 Unassisted; Adj. 205 WT: 795  
Here is a stout, hairy, easy doing son of Wyoming Wind. His dam was the Top Point Charolais Heifer and 5th overall against all breeds in Iowa.

**16** Bull **EJ Shepherd Charolais**  
- EJ W Wind Tiara 47 -  
Polled Purebred Calved: 02/28/2008 Reg.#: EM760300 Tattoo: 47 ET



Schurrtop 5627	WCR Sir Duke 783	BW:16
<b>LT Wyoming Wind 4020 Pld</b>	Miss Sugar Valley 908	WW:30
LT Chap's Lady 2170P	LT Unlimited Chaps 0109	YW:49
	LT Prairie Maiden 8095	Milk:13
VCR Sis Duke 914 Pld	WCR Sir Duke 761	Mtnl:28
<b>JWK Tiara H116</b>	WCR Miss Mac IV 534	SC:11
JWK Tiara F166 ET	WCR Power T 2375 Polled	CW:13
	JWK Brianna D090 ET	REA:027

BW: 100 Unassisted; Adj. 205 WT: 520; FAT:0003; Marb:001  
EJ W Wind Tiara 47 has excellent maternal characteristics in his pedigree. His mother ranks in the top 1% of the breed for weaning, yearling, milk and TM. His sire, Wyoming Wind, has had a huge impact on the breed. The way this bull is structured, he should be an easy calving bull.

# Charolais

**17 Bull Kotrous Charolais**  
- JJK Mr Peugeot 8035 P -  
Polled Purebred Calved: 02/28/2008 Reg.#: M756594 Tattoo: 8035

2UP Peugeot ET	2UP Limited Edition L147	BW:0.2
<b>Keys Peugeot 62L</b>	J124 PalGroveStella	WW:18
Miss Key Virginia 47H	ASC Eliminator 032	YW:25
	LTC Ms Virginia 631 Pld	Milk:6
Funks Sir Mac 203	SCR Sir Mac 7005	Mtnl:15
<b>JJK Miss Mac 0035</b>	Funks Ms Carol	
JJK Miss Target 4036	RZ Sir Target Y10	
	JJK Miss Impressive 88	

BW: 84 Unassisted; Adj. 205 WT: 739; Retaining 1/4 Semen Interest  
This is one of our heaviest weaning bulls out of the most consistent cow family we have.

**21 Bull West Fork Ranch**  
- WFR Timax 8018 P -  
Polled Purebred Calved: 03/07/2008 Reg.#: Pending Tattoo: 8018

LHD Cigar E46	LHD Mr Perfect Y416	BW:1.5
<b>M6 Big Top 268 Pld ET</b>	LHD Ms Classic Bell X613	WW:29
M6 Ms Impressive 8380Pld	JWK Impressive D040 Et	YW:39
	Moores Ms Eliminator ET	Milk:6
WFR Imax 9100	JWK Impressive D040 ET	Mtnl:21
<b>WFR Ima 285</b>	WFR Maxine 405	
WFR Faith 061 P	Baldrige Fastrack 82F	
	Dbl D Cameo Edge P12	

BW: 78 Unassisted; Adj. 205 WT: 720  
Look at this herd sire prospect! Timax has it all; performance, pedigree, a great disposition, and check out that birth weight! You can't beat that! His dam has been an exceptional cow in our herd. Don't miss him! He's what you're looking for.

**18 Bull Cannon Farms**  
- CCF Wind 0816 P ET -  
Polled Purebred Calved: 03/01/2008 Reg.#: Pending Tattoo: 0816 ET

LT Wyoming Wind 4020 Pld	Schurrtop 5627	BW:0.9
<b>Three Trees Wind 0383</b>	LT Chap's Lady 2170P	WW:24
Three Trees Nancy 8121 ET	Skyront Ease 2078	YW:46
	WCR Miss Mac IV 5138 ET	Milk:3
HTA Tundra 222B	MZL Polled Raven 165Y	Mtnl:15
<b>GS Tina 5493</b>	Chardel Lady Sage 1003Z	
WCR Miss Tradition 3493	WCR Sir Tradition 066	
	WCR Miss Duke 8714	

BW: 90 Unassisted; Adj. 205 WT: 710  
Wind 0816 is a stout built yearling that sports a negative BW EPD. Wind is a long sided, big footed bull that will have excellent ultrasound information that will be available sale day. Maternal siblings work in several purebred and commercial herds with great reports.

**22 Bull Dybdal Charolais**  
- LKD Mr Fritz's Integrity -  
Polled Purebred Calved: 03/12/2008 Reg.#: M756152 Tattoo: 849

RC BudsMyDad 225 Polled	RC Bud 04 ET	BW:1.1
<b>TLC Integrity 5087P ET</b>	Miss Showgun RC 416	WW:24
RacMissExpediter6024FPld	Mr Inland Expediter 501	YW:43
	RAR Miss Frig Z0203 Twin	Milk:14
Baldrige Fastrack 82F	LT Unlimited Ease 9108	Mtnl:26
<b>CMF 152 Joan 354N</b>	Baldrige Sweetheart 53D	
CMF 152 of 101 Balance	KF Balance 2 ET	
	CMF Miss Joan 101	

BW: 93 Unassisted; Adj. 205 WT: 765  
This is the first offering of the Integrity calves. He was shown at the Nebraska State Fair and did very well in his class. He has a super disposition and will add size and structure to your calves.

**19 Bull Funk Charolais**  
- FC Harvestor 851 P -  
Polled Purebred Calved: 03/06/2008 Reg.#: M758535 Tattoo: F851

SCR Superb 0089	SCR New Trend 152E ET	BW:0.7
<b>SCR New Moon 2350</b>	SCR Miss Sky Rise 3450TW	WW:38
SCR Miss Lindy 9233	SCR Polar 2355	YW:66
	SCR Miss Magic 360 P	Milk:3
WCR Prime Time 908 P	WCR Prime Cut 764 P	Mtnl:16
<b>FC Ms Real Time 237</b>	WCR Ms Dakota Wind7158	SC:07
FC Ms Ease 908 P	LT Unlimited Ease 9108	
	Funks Ms Hot Time 739 P	

BW: 97 Unassisted; Adj. 205 WT: 879  
This calf will add frame and pounds to your calf crop.

**23 Bull Dybdal Charolais**  
- LKD Mr Integrity 865 -  
Polled Purebred Calved: 03/16/2008 Reg.#: M756207 Tattoo: 865

RC BudsMyDad 225 Polled	RC Bud 04 ET	BW:2
<b>TLC Integrity 5087P ET</b>	Miss Showgun RC 416	WW:22
RacMissExpediter6024FPld	Mr Inland Expediter 501	YW:42
	RAR Miss Frig Z0203 Twin	Milk:10
LKD Mr Perfect 844	LHD Mr Perfect Y416	Mtnl:21
<b>LKD Miss Perfect 188</b>	Composers Mariah Pld ET	
SF 20/20 Polled 696	Sir EC 20/20 Pld 92G	
	SF Miss 168 Polled 495	

BW: 97 Unassisted; Adj. 205 WT: 780  
Here's another great Integrity son. Check this bull out because his dam produced the Champion Heifer at last year's Classic. This is another good one.

**20 Bull EJ Shepherd Charolais**  
- EJ T Winds Duke 60 -  
Polled Purebred Calved: 03/06/2008 Reg.#: EM762066 Tattoo: 60 ET



LT Wyoming Wind 4020 Pld	Schurrtop 5627	BW:0.7
<b>LT Thundering Wind 5200P</b>	LT Chaps Lady 2170P	WW:42
LT Eases Pearl 9034 Pld	LT Unlimited Ease 9108	YW:67
	LT Unlimited Pearl 7015P	Milk:11
VCR Sir Duke 914 Pld	WCR Sir Duke 761	Mtnl:32
<b>M6 Ms Duke 240 PLD</b>	WCR Miss Mac IV 534	SC:1.1
MLF Sir Mac's Deb PET	WCR Sir Fa Mac 2244	CW:29
	WCR Miss Tradition 3471	REA:047

BW: 100 Unassisted; Adj. 205 WT: 628; FAT:0.009; Marb:0.03  
EJ T Winds Duke 60 is out of a flush from the Parks Herd in OK. M6 Ms Duke 240 has great EPDs and performance that should carry on in this herd sire. His sire, LT Thundering Wind 5200 sold for \$77,000 in SD. His ratios were 116/36 WW, 114/35 YW and ribeye of 171 ratio 116, IMF 3.22 ratio 115. These qualities make him an outstanding bull for any breeder.



# Charolais

**24** Bred **Sonderup Charolais Ranch Inc**  
 - SCR Miss High Noon 7037 -  
 Polled Purebred Calved: 01/27/2007 Reg.#: Pending Tattoo: 7037



SCR Sky Rise 4158	FM Sky Rise 5-423	BW:08
<b>SCR Sunset 0330</b>	SCR Miss Pedro 4034	WW:21
SCR Miss Curley 1138	SCR Sir Magic 129 Polled	YW:32
	OCR Miss Cyrano 133	Milk:7
SCR Appollon 8131	Ernmoo Appollon 28D ET	
<b>SCR Miss Frenchy 4173</b>	SCR Miss New Trend 3242	
SCR Miss Sky Rise 3450TW	FM Sky Rise 5-423	
	EEE Beauty 106	

Miss High Noon will sell safe in calf. This very broody female was shown as a market heifer successfully last year. She will produce those deep, thick, eye appealing smokies so many people are looking for.

**25** Bred **Kanza Cattle**  
 - Kanza Uptown Girl 703 -  
 Polled Purebred Calved: 04/08/2007 Reg.#: F1066273 Tattoo: 703



LT Assertion 1277 P	Eatons Assert 9171	BW:08
<b>SLS Ringo 501</b>	LT Allie's Class 9140 P	WW:30
SLS Nora 304	LT Wyoming Wind 4020 Pld	YW:55
	SLS Laci's Impression	Milk:1
WCR Prime Time 908 P	WCR Prime Cut 764 Pld	Mtn:16
<b>Miss HCR Primrose 4122</b>	WCR Miss Dakota Wind7158	CW:11
Miss HCR Randi 2073 Pld	Schurrtop HCR Rancher	REA:0.28
	Miss HCR Reflection 9094	

BW: 80 Unassisted; FAT:0004; Marb:002  
 Up Town Girl is AI'd safe in calf to LC Suspect 0109, a popular birthweight sire and sire of Mercedes and due 3/29/09. This will probably be the only natural daughter of Miss HCR Primrose 4122 that we ever let go of. 4122 is the dam of the 2008 Jr National Reserve Champion Bred & Owned female. Uptown Girl had a successful show career also. She was 3rd at the Louisville National in '07 and 3rd twice at Jr National in both the B&O and Owned heifer divisions. What a sweet package as well as a sweet disposition!

**26** Bred **Morgan Cattle Co**  
 - 2TM Ms 0383 Hoodoo 753 -  
 Polled Purebred Calved: 11/02/2007 Reg.#: F1083736 Tattoo: 753

LT Wyoming Wind 4020 P	Schurrtop 5627	BW:03
<b>Three Trees Wind 0383 ET</b>	LT Chaps Lady 2170P	WW:18
Three Trees Nancy 8121ET	Skymont Ease 2078	YW:32
	WCR Miss Mac IV 5138 ET	Milk:1
Hoodoo 3013	Hoodoo 5078 Orrtel 9006	Mtn:10
<b>Ms Hoodoo Sandcreek Z8077</b>	Miss Sand Z 4134	SC:02
Orr-Tel ZF 098	Mr Astro 4038	
	Ms Orrtel Z 5120	

BW: 78 Unassisted; Adj. 205 WT: 645; Adj. 365 WT: 980  
 Ms Hoodoo 753 was AI bred to PF Infinite Justice 1001 P ET on December 26. This great cow prospect is a half sister to the 2003 Denver Bull Calf Champion. Check out her outcross pedigree!

**27** Heifer **Dybdal Charolais**  
 - LKD Miss Priscilla's Bullseye 831 -  
 Polled Purebred Calved: 03/03/2008 Reg.#: F1091429 Tattoo: 831

Eatons Beyond 7243	Eatons Centurion 3324	BW:14
<b>Eatons Bullseye 3033 TW</b>	Eatons Miss Falls 3639	WW:21
Eatons Sabra 1533	LT Polled Value 9089	YW:48
	Eatons Sabra 9511	Milk:13
WM Ali Star 250 ET	VCR Sir Duke 914 Pld	Mtn:11
<b>RCR MsPerfectAliStar P48</b>	NF Agatha 9581 Polled	SC:1.2
WM Ms Perfect Duke228PET	WCF Sir Duke 761	CW:11
	BHD Ms Perfect F40	REA:-0.19

BW: 80 Unassisted; Adj. 205 WT: 680; FAT:0002; Marb:0.22  
 Here's a super Bullseye heifer. There is a lot of show potential in this calf. She will then go on to be an excellent cow in your herd. Make sure to check this heifer out.

**28** Heifer **West Fork Ranch**  
 - WFR Rachel 8190 P -  
 Polled Purebred Calved: 03/05/2008 Reg.#: Pending Tattoo: 8190

LT Assertion 1277P	Eatons Assert 9171	BW:15
<b>SLS Ringo 501</b>	LT Allie's Class 9140 P	WW:22
SLS Nora 304 P	LT Wyoming Wind 4020 P	YW:34
	SLS Laci's Impression 901	Milk:6
Mr Renovator	DC Mr Eliminator 2210 P	Mtn:17
<b>WFR Renata 130 P</b>	Mr Ms Dutchess C67	
WFR Lady Flare 766P	WFR Concorde 487 P	
	WFR Lilly 447	

BW: 99 Unassisted; Adj. 205 WT: 554  
 Not many heifers leave West Fork Ranch. However, here is an opportunity to purchase one of the best. She is a great show heifer prospect that will go on to be a great cow. Come see her in Kearney!

**29** Heifer **Funk Charolais**  
 - FC Ms Half Moon 856 P -  
 Polled Purebred Calved: 03/07/2008 Reg.#: F1087571 Tattoo: F856

SCR Superb 0089	SCR New Trend 152E ET	BW:04
<b>SCR New Moon 2350</b>	SCR Miss Sky Rise 3450TW	WW:23
SCR Miss Lindy 9233	SCR Polar 2355	YW:44
	SCR Miss Magic 360	Milk:2
SCM Montana Jo-Jo H487	SCM Double Joe D96	Mtn:14
<b>FC Ms Josie</b>	SCM Char Milara X67	
FC Ms Balmyle 934	KD Balmyle 12B	
	Funks Ms Curley 325	

BW: 96 Unassisted; Adj. 205 WT: 621  
 This is a nicely patterned female.

**30** Heifer **Sonderup Charolais Ranch Inc**  
 - NBC Miss High Noon 88016 -  
 Polled Purebred Calved: 04/10/2008 Reg.#: Pending Tattoo: 88016

SCR Sky Rise 4158	FM Sky Rise 5-423
<b>SCR Sunset 0330</b>	SCR Miss Pedro 4034
SCR Miss Curley 1138	SCR Sir Magic 129 Polled
	OCR Miss Cyrano L33
SCR Majestic 7397	SCR Magic 3198
<b>SCR Miss Kingdom 0276</b>	SCR Miss Barney 1082
SCR Miss Polar 224D ET	FM White Polar Poll 012
	SCR Miss Star 0170

This is a very attractive show heifer prospect out of one of our top producing cows.

